

## PRIMARY COMPANY INFORMATION:

(The "Exhibiting as" company name, address, phone, toll-free phone, and URL listed below will be published in the printed Event Guide and online exhibitor listing).

Legal Company Name: \_\_\_\_\_

Exhibiting as: \_\_\_\_\_

Mailing Address: \_\_\_\_\_

City: \_\_\_\_\_ State/Province: \_\_\_\_\_

Zip/Postal Code: \_\_\_\_\_ Country\*\* : \_\_\_\_\_ Web Address: \_\_\_\_\_

Phone: \_\_\_\_\_ Toll-Free: \_\_\_\_\_ Fax: \_\_\_\_\_

## SHOW CONTACT INFORMATION:

(If the show contact is not responsible for the overall health and safety at the event then please email the contact information to dana.murrell@informa.com.)

Contact: \_\_\_\_\_ Title: \_\_\_\_\_

Phone: \_\_\_\_\_ Fax: \_\_\_\_\_

E-mail: \_\_\_\_\_

## INVOICE/ACCOUNTING CONTACT INFORMATION:

(FOR ALL INVOICE/ACCOUNTING CORRESPONDENCE. If different address than above, please fill in below).

Contact Name: \_\_\_\_\_

Mailing Address: \_\_\_\_\_

Phone: \_\_\_\_\_ Fax: \_\_\_\_\_

E-mail: \_\_\_\_\_

## MARKETING CONTACT INFORMATION:

(FOR ALL MARKETING CORRESPONDENCE. If different than above, please fill in below).

Contact Name: \_\_\_\_\_

Phone: \_\_\_\_\_ E-mail: \_\_\_\_\_

## CHOICE SPACE SELECTION

Choice Space Selection gives you the freedom and flexibility of choosing the exhibit space, booth layout and investment level that works best for your business. Simply choose from: (1) member versus non-member, (2) the number of open sides (or corners) your booth layout requires, and (3) your square footage needs.

List all preferred booth space(s). All space is allocated in 100 sq. ft. increments. Please provide 3 options.

1st Choice \_\_\_\_\_ 2nd Choice \_\_\_\_\_ 3rd Choice \_\_\_\_\_

Please reserve exhibit space in The International Surface Event (TISE) 2023 to be held 31 January - 2 February at the Mandalay Bay Convention Center. We request the exhibit space(s) listed above. If our space choice has been allocated, we request that The International Surface Event assign what it considers to be the best space available.

## CHOICE SPACE COST

Are you a WFCMA Associate Member?  YES WFCMA Member # \_\_\_\_\_  No

Are you a Natural Stone Institute Member?  YES Nat. Stone Institute Member # \_\_\_\_\_  No

Are you a NTCA Member?  YES NTCA Member # \_\_\_\_\_  No

To qualify for WFCMA member rates, dues must be paid current for 2022-2023 by October 15, 2022 to the World Floor Covering Association. Visit [www.wfca.org](http://www.wfca.org) for details. To qualify for the Sponsoring Organization member rate with Natural Stone Institute or any of the other sponsoring organizations, you must be a current member in good standing by June 30, 2022.

MEMBERS	1 Open Side	2 Open Sides	3 Open Sides	4 Open Sides
	(No Corner)	(1 Corner)	(2 Corners)	(4 Corners)
Standard Rate	\$ 37.75	\$ 39.30	\$ 39.70	\$ 40.15

NON MEMBERS	1 Open Side	2 Open Sides	3 Open Sides	4 Open Sides
	(No Corner)	(1 Corner)	(2 Corners)	(4 Corners)
Standard Rate	\$ 47.20	\$ 49.15	\$ 49.65	\$ 50.20

**ON FLOOR / OFF FLOOR PRODUCT SHOWROOMS: Member \$44.95 / sq. ft. | Non-Member \$56.20**

TOTAL SQUARE FEET \_\_\_\_\_ X TOTAL APPLICABLE SQUARE FOOT RATE \_\_\_\_\_ = TOTAL EXHIBIT SPACE COST \$ \_\_\_\_\_

Would you like to add a lead scanner or an upgraded listing? LISTING PACKAGE UPGRADE \$ \_\_\_\_\_ = + LEAD SCANNER \$ \_\_\_\_\_ = TOTAL UPGRADES \$ \_\_\_\_\_  
See attached listing page.

Which show do you wish to exhibit in?  
Number of open sides selected?  
What options did you select, if any?  
What markets do you sell to at TISE?  
What products will you be exhibiting at TISE?

SURFACES  StoneExpo/Marmomac  TileExpo  
 4 Open Sides  3 Open Sides  2 Open Sides  1 Open Side  
 On Floor Meeting Room  Off Floor Meeting Room  
 Residential Only  Commercial Only  Both

## Calculate Total

### CALCULATE THE CONTRACT TOTAL

Exhibit Space Total Cost \$ \_\_\_\_\_  
Add Listing Fee + \$ **\$450**  
Add Upgrades + \$ \_\_\_\_\_  
**CONTRACT TOTAL** \$ \_\_\_\_\_

### CALCULATE THE DEPOSIT TOTAL (50% BEFORE OCT. 1, 100% AFTER OCT. 1)

Deposit % of Exhibit Space Total Cost \$ \_\_\_\_\_  
Add Listing Fee + \$ **\$450**  
Add Upgrades \$ \_\_\_\_\_  
**DEPOSIT TOTAL** \$ \_\_\_\_\_

Please endorse a check for this amount. Make check payable to: THE INTERNATIONAL SURFACE EVENT SALES

## QUESTIONS?

Please contact Show Management at 800.547.3477, 972.536.6400 or [sales@TISEwest.com](mailto:sales@TISEwest.com) with any questions. All payments should be in U.S. funds. Exhibitors are responsible for all bank collection fees and/or discounts associated with their payments.

## METHOD OF PAYMENT:

U.S. funds only, please check one:  
 Check made payable to: The International Surface Event  
 Wire / ACH  
 Credit Card: PCI compliance requires credit card information must only be received via our secure fax line 972-550-5390 or through our online contract portal.

## MAIL CHECKS TO:

Informa Markets | The International Surface Event  
222 West Las Colinas Boulevard, Suite 450E  
Irving, Texas 75039  
Toll-free: 800.547.3477  
Outside USA: 972.536.6400

## FOR SHOW MANAGEMENT USE ONLY

Date Received: \_\_\_\_\_

Booth Type: \_\_\_\_\_

Booths Assigned: \_\_\_\_\_

TSF: \_\_\_\_\_

Deposit Received: \_\_\_\_\_

AE: \_\_\_\_\_

CO ID#: \_\_\_\_\_

GL CODE: \_\_\_\_\_

**50% deposit due at contract signing and balance due August 5, 2022. All contracts submitted after August 5, 2022, pay in full at contract signing.**

We understand this application becomes a binding contract when accepted by Informa Exhibitions U.S. Construction & Real Estate, Inc. We agree to abide by the Informa Markets Sponsorship and Exhibitions Terms and Conditions found online [www.intlsurfaceevent.com/exhibit-terms](http://www.intlsurfaceevent.com/exhibit-terms) and regulations adopted by Informa Exhibitions U.S. Construction & Real Estate, Inc. in accordance with the terms herein. By providing your contact information and signature, you are authorizing by Informa Exhibitions U.S. Construction & Real Estate, Inc. to send you promotional materials via mail, fax, SMS or email.

## Required

Signature: \_\_\_\_\_ Printed Name: \_\_\_\_\_ Date: \_\_\_\_\_



CHOOSE TO BE

# VISIBLE



ENHANCED LISTINGS GET YOU MORE TRAFFIC ON THE ONLINE EXHIBITOR DIRECTORY AND FLOOR PLAN.

**2023 EXHIBITS 31 January - 2 February**  
Mandalay Bay Convention Center | Las Vegas, NV

INCLUDED WITH BOOTH

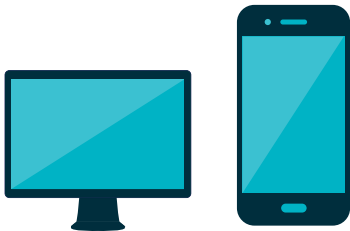
**BASIC**

**ENHANCED EXPOSURE**

BEST VALUE

**MAXIMUM EXPOSURE**

## EXHIBITOR DIRECTORY



ATTENDEES USE THE EXHIBITOR DIRECTORY TO PLAN THEIR VISIT TO THE TISE EVENT AND SHORT-LIST THE EXHIBITORS THEY PLAN TO SEE. BE SEEN DURING THE SHOW AS ATTENDEES DOWNLOAD AND USE THE MOBILE APP TO STAY ORGANIZED AND BROWSE SESSIONS, EXHIBITORS, AND PRODUCTS.

	BASIC	ENHANCED EXPOSURE	MAXIMUM EXPOSURE
Company Name	Yes	Yes	Yes
Booth Number	Yes	Yes	Yes
Company Address	Yes	Yes	Yes
Company Description	Yes	Yes	Yes
Company Logo	Yes	Yes	Yes
Product Categories	10	20	20
Product Images & Descriptions	1	5	10
Show Specials	0	5	5
Hyperlink to website	No	Yes	Yes
Access to Online Leads	No	Yes	Yes
Mobile App Product Category Banner Ad (non-exclusive)	0	1	1
Video Panels	0	0	5
Documents / Collateral	0	0	5
Priority Directory Placement	No	No	Yes
<b>VISIBILITY PACKAGE COST</b>	<b>\$0</b>	<b>\$500</b>	<b>\$800</b>
<b>Add Lead Retrieval NOW and SAVE!</b>			
Lead Retrieval Mobile App (download app onto 3 devices)	+ \$600	+ \$500	+ \$400
<b>VISIBILITY + LEAD RETRIEVAL</b>	<b>\$600</b>	<b>\$1,000</b>	<b>\$1,200</b>

MORE INFORMATION at [sales@tisewest.com](mailto:sales@tisewest.com) | 972.536.6300

[Twitter](#) [Facebook](#) [Instagram](#) @tisevents

**THE INTERNATIONAL SURFACE EVENT**

